

OMNIE

CSQ-STAT230V  
OMNIE Thermostat - Hard Wired 230V



Quick Guide

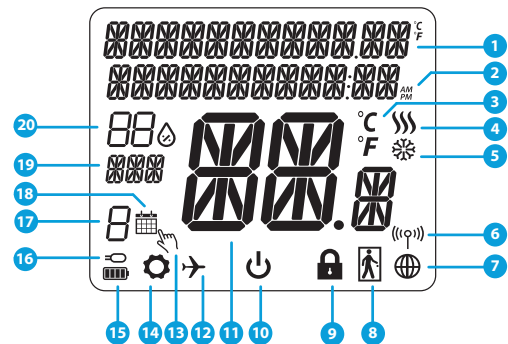
230 V  
Powered

Easy  
Installation

Wireless  
Control

Humidity  
Sensor

## LCD Icon Description



1. Menu/Settings description + Clock
2. AM/PM
3. Temperature unit
4. Heating indicator (icon is animating when there is heating demand)
5. Cooling indicator (icon is animating when there is cooling demand)
6. RF Connection indicator
7. Internet connection indicator
8. Occupancy sensor (hotel card)
9. Key lock function
10. Standby mode icon
11. Current Temperature / Setpoint Temperature
12. Holiday mode
13. Temporary override mode
14. Settings icon
15. Battery status indicator
16. External / Floor temp sensor indicator
17. Schedule program number
18. Schedule mode icon
19. Day indicator/ SET information
20. Current Humidity value

## Buttons Description

Button	Function
	1) Menu button / Return button. 2) In the MAIN SCREEN: Press and hold for 3 sec to change the thermostat operating mode (Schedule mode / Permanent mode / Temporary override mode). 3) In the SETTINGS SCREEN: Press and hold for 3 sec to go back without saving the changes. 4) In the PAIRING SCREEN (in SYSTEM TYPE Menu): Press and hold for 3 sec to see other pairing options.
	„Down“ Button (Decrease parameter value/moving on the menu in „DOWN“ direction)
	„Up“ Button (Increase parameter value/moving on the menu in „UP“ direction)
	1) Press and hold for 3 seconds to POWER UP new device 2) „OK / Tick“ Button (Confirm parameter value / Go to the next menu / Save settings) 3) In the MAIN SCREEN: Press and hold for 3 seconds to enter Standby mode 4) In the SETTINGS SCREEN: Press and hold for 3 sec to go back to the MAIN SCREEN & SAVE all the changes. 5) During PAIRING process – hold button for 3 seconds to POWER OFF or REBOOT the thermostat.
	In the MAIN SCREEN - press and hold these buttons together for 3 seconds to LOCK / UNLOCK the Thermostat keys).

## Compatibility with Other OMNIE devices:

CSQ-STAT230V Thermostat can work in ONLINE or OFFLINE mode. \*  
At first step you need to decide in which mode your thermostat will work.

### ONLINE MODE



OMNIE Communications Gateway is CONNECTED TO THE INTERNET. You can configure and use all your devices in the OMNIE Home App.

Download the OMNIE Home App on your iOS or Android device for remote access to your OMNIE equipment.

### Compatible devices:



CSQ-RELAYRF  
OMNIE Smart Relay

\*Only with Online Mode



Wiring Centre for 8-zone  
underfloor heating  
(UFH).

### OFFLINE MODE



OMNIE Communications Gateway is NOT CONNECTED TO THE INTERNET - You can use your devices locally without the Home App. Gateway works in this mode as standard ZigBee coordinator.

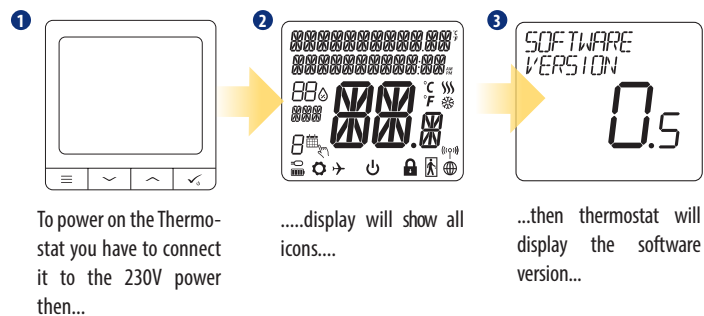


TRV  
(Thermostatic  
Radiator Valve)  
with wireless  
communication.

## First Power Up Sequence

### Please note:

For easier installation, please make sure you have already added other devices to your ZigBee network, such as Underfloor Heating Control Box or Radiator heads etc.



To power on the Thermostat you have to connect it to the 230V power then...

.....display will show all icons....

...then thermostat will display the software version...

### YES-ONLINE, OFFLINE MODE.

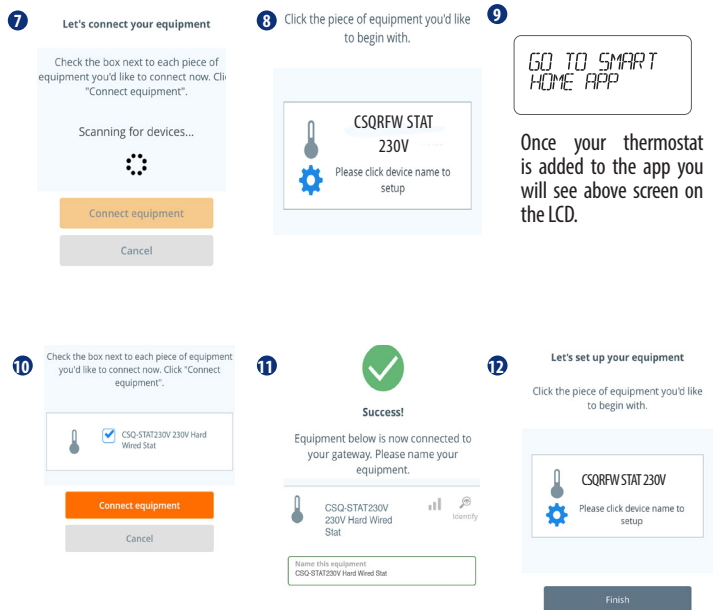
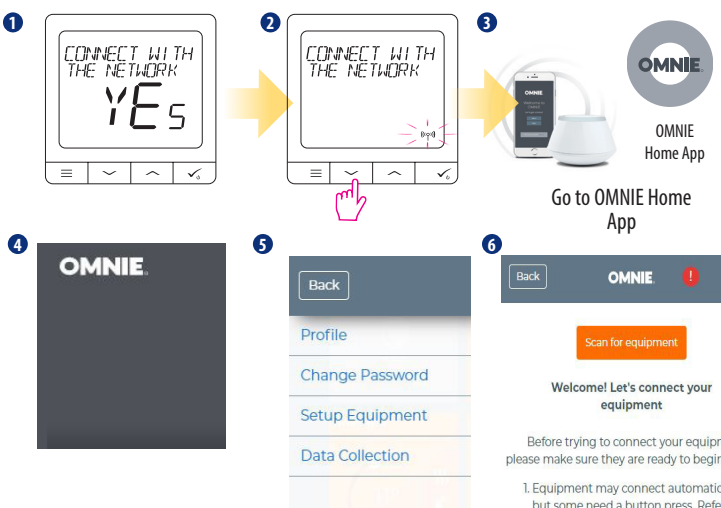
You can configure your thermostat with OMNIE Communications Gateway. That is, add it to the OMNIE Home system.

### NO- STANDALONE.

Thermostat work as a standalone device for pump, boiler, receivers etc. That is, you can directly connect thermostat to selected device without any network system. You can add it later anytime.

## Installation in ONLINE mode

After Language selection follow below steps to add your device to the OMNIE Home App and pair with other devices:



## Introduction

The CSQ-STAT230V is a ZigBee temperature controller for wireless control of a series devices, compatible with product such as a wiring centre, mini TRV head or a boiler control module. In order to control CSQ-STAT230V via the OMNIE Home app (ONLINE mode), it must be installed together with the OMNIE Communications Gateway (sold separately). From the application level, it is possible to pair CSQ-STAT230V with other system elements, e.g. Smart Plug, OMNIE Smart Relay or window/door sensor. CSQ-STAT230V can be used locally without an Internet connection (OFFLINE mode).

## Product Compliance

This product complies with the essential requirements and other relevant provisions of Directives 2014/30/EU, 2014/35/EU, 2014/53/EU and 2011/65/EU. The full text of the EU Declaration of Conformity is available at the following internet address: [www.omnie.co.uk/legal](http://www.omnie.co.uk/legal) (CE) 868.0-868.6MHz; <13dBm

## Safety Information

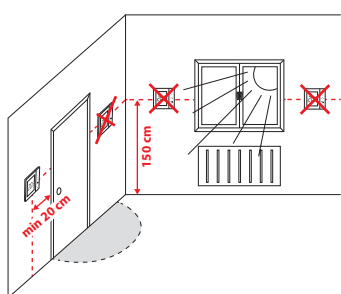
Use in accordance to national and EU regulations. Use the device as intended, keeping it in dry condition. Product for indoor use only. Installation must be carried out by a qualified person in accordance to national and EU regulations. Disconnect your equipment before cleaning it with a dry cloth.

Please always ensure the AC 230V mains power is switched off before installing or working on any components.

## Package Content:

- 1) CSQ-STAT230V thermostat
- 2) Mounting screws
- 3) Manual instruction

## Before you start:



## Wiring diagram:

### Symbols explanation:

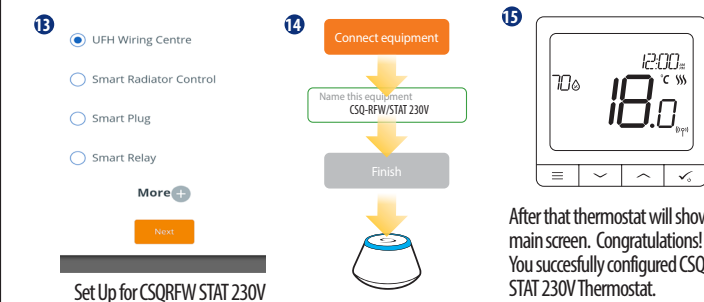
S – volt-free contact  
T – temperature sensor

### S1,S2 Terminals:

- air or floor temperature sensor
- external volt-free contact to connect any ON/OFF switch or occupancy sensor (Hotel card)

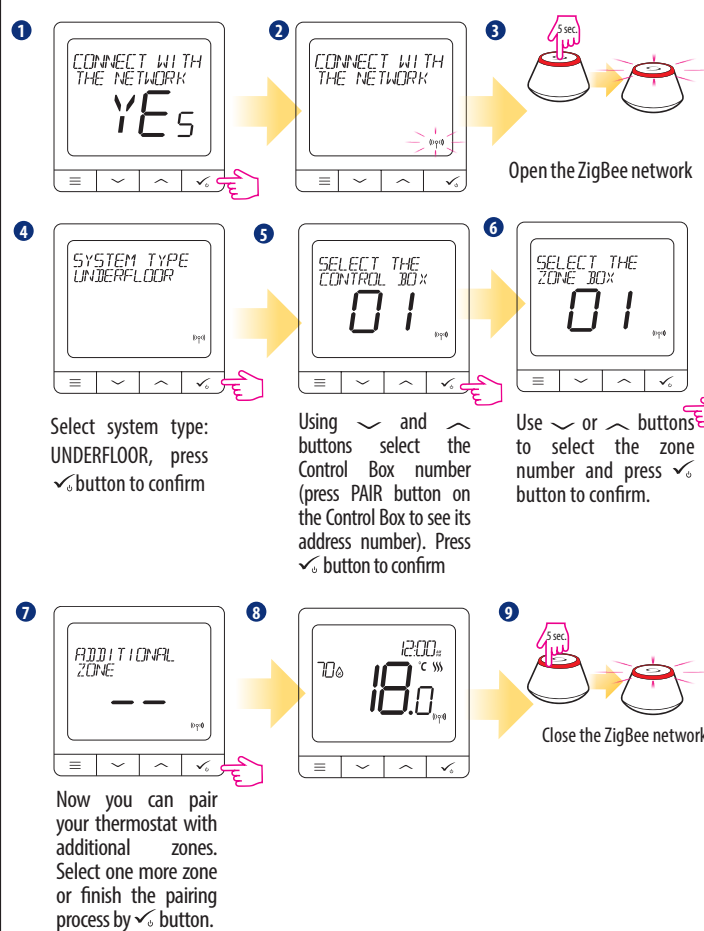
### Please note:

The ideal position to thermostat mounting is about 1,5m under floor level far from heating or cooling sources. Thermostat can't be exposed to sunlight or any extreme conditions like for example draft.



## Installation in OFFLINE mode

Pairing with Wiring Centre / Control Box (Install the Wiring Centre / Control Box according to the instructions included with product)

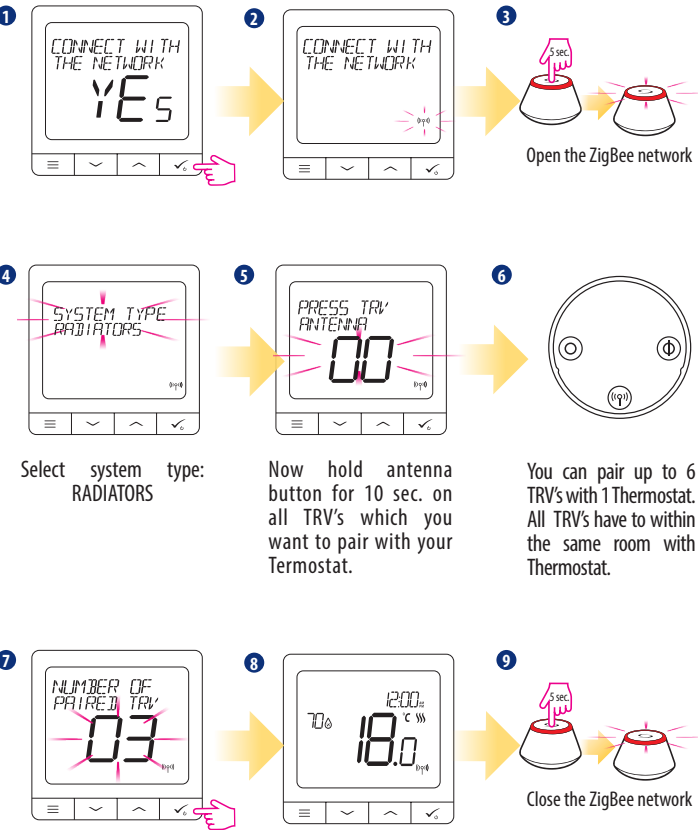


OMNIE Limited  
Unit 18 Apple Lane  
Exeter  
EX2 5GL  
United Kingdom

Technical support can be found at:  
[Customer.services@omnia.co.uk](mailto:Customer.services@omnia.co.uk)  
01392 36 36 05



### Pairing with a Thermostatic Radiator Valve



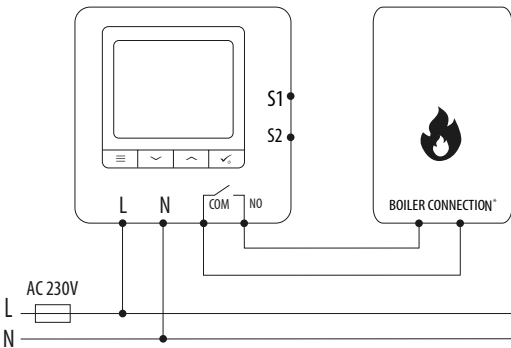
### Wired Device



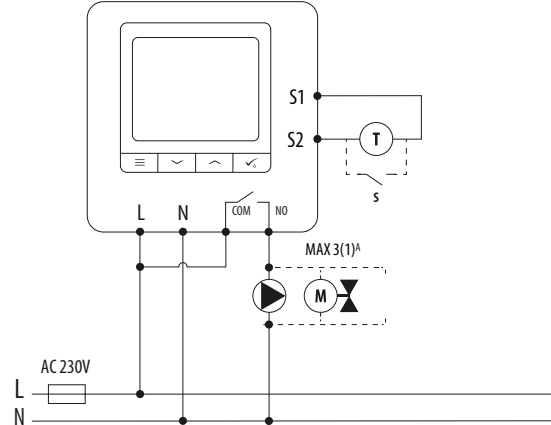
#### Please note:

Thermostat CSQ-STAT 230 V can work without OMNIE Communications Gateway as a standalone device.

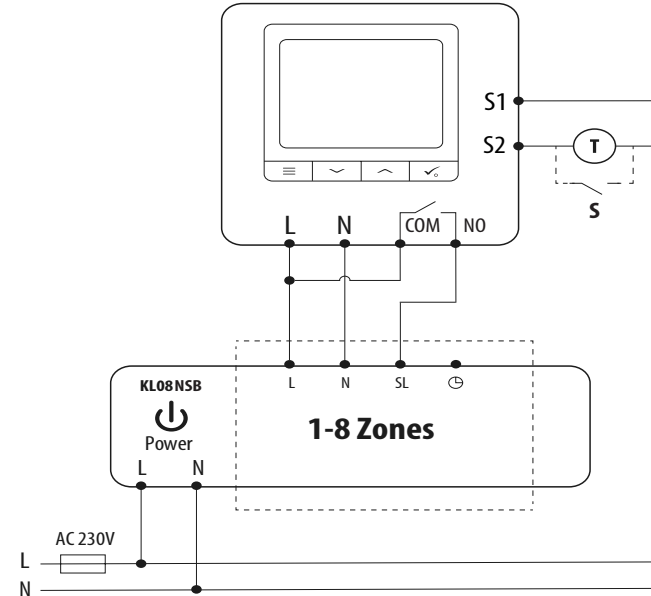
#### 1 Wiring diagram for volt-free connection (e.g. boiler control):



#### 2 Wiring diagram for 230VAC connections:



#### 3 Wiring diagram for control box connection:



#### Legend:



Pump



Valve actuator

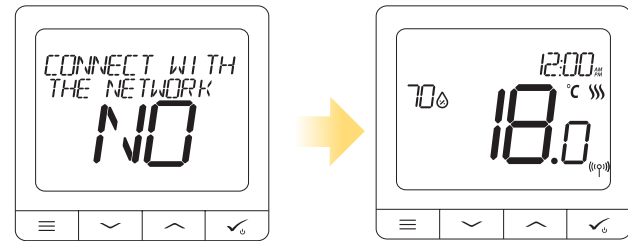


Heating mat



Boiler

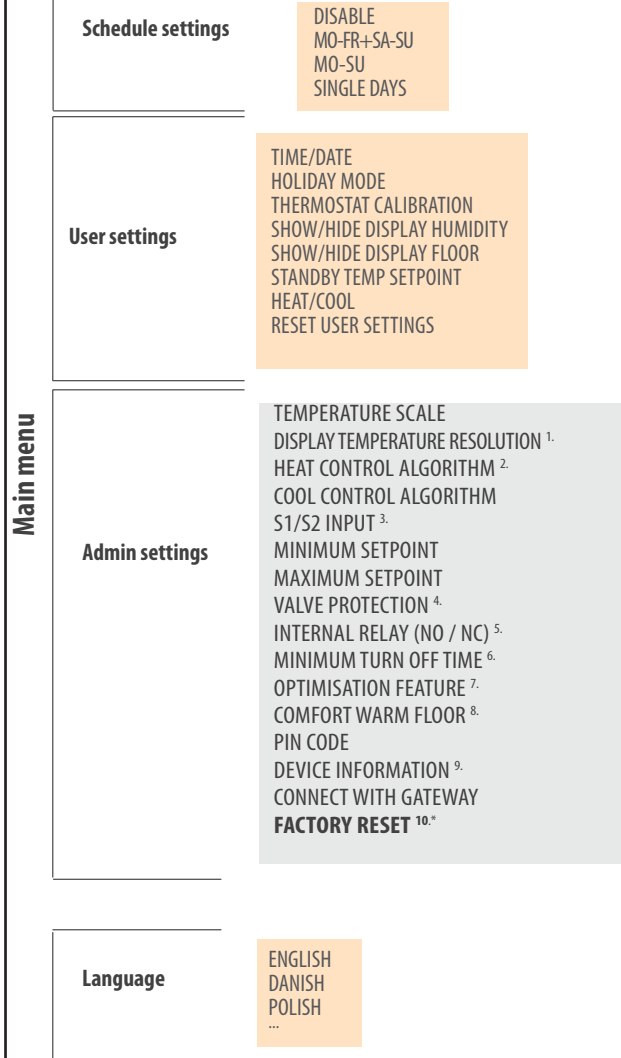
Boiler connection \* - Boiler's contacts for ON/OFF thermostat (according to the boiler's instructions)



#### Please note:

Self-acting CSQ-STAT230V Thermostat without application support can be easily added to the OMNIE Home App anytime. All settings made before adding to the application are automatically copied to the OMNIE Home App.

### CSQ-STAT230V Full menu structure



### Short description of some selected functions

(all functions are described in the full version of the CSQ-STAT230V manual):

- 1. DISPLAY TEMP RESOLUTION:** This function determines the resolution of the displayed temperature (0.5°C or 0.1°C). Temperature unit
- 2. CONTROL ALGORITHM:** This function defines how to control the room temperature. Available options are: ITLC for Underfloor Heating / Radiators / Electrical Heating (that's advanced algorithm for precise maintenance of room temperature), hysteresis +/-0.5°C or +/-0.25°C.
- 3. S1/S2 INPUT:** A floor sensor, an external temperature sensor or an occupancy sensor can be connected to the S1/S2 input of CSQ-STAT230V. Additionally, by connecting a NO type of ON/OFF voltage-free contact, you can use this input as a OneTouch rules trigger (programmed in the OMNIE OMNIE Home App) or as a Heat/Cool changeover.
- 4. VALVE PROTECTION:** This function activates all actuators once a week for 5 minutes (in summer, this function helps to prevent the actuators stuck).
- 5. INTERNAL RELAY (COM/NO):** Internal relay activation or deactivation with COM/NO outputs use. Default is enable.
- 6. MIN TURN OFF TIME:** Minimum switch-off time (thermostat will not send the signal for heating/cooling more often than specified in this parameter)
- 7. OPTIMISATION FEATURE:** Optimum Start and Optimum Stop functions are energy saving feature that makes thermostat most cost effective (in combination with ITLC control algorithm).
- 8. COMFORT WARM FLOOR:** This function helps to keep the floor warm, even if the room is warm enough and there is no need to turn on the heating. User can select 3 levels of warm floor feature. Please note it is not an economy feature, as your heating system may be ON even if there is no heating demand from the room thermostat. It is COMFORT feature which keeps your floor warm all the time.
- 9. DEVICE INFORMATION:** In this menu user can check: Software Version, RF range value, Paired devices or also user can activate Identification mode. **FACTORY RESET:** Here you can RESET your device to factory settings. After successful reset device will be removed from ZigBee network and you will need to add / pair your device again.

## CSQ-STAT230V

Power Supply	AC 230 V
Temperature range	5-40°C
Display temperature accuracy	0.5°C or 0.1°C
Control algorithm	ITLC SPAN (±0.25°C / ±0.5°C)
S1-S2 Input (multifunctional input)	Floor temperature Air temperature Occupancy sensor One Touch Changeover (heating/cooling)
Output control	COM – NO (volt-free)
Max current	3 (1) A
Communication protocol	ZigBee 2,4GHz
Mounting	Flush mounting
Working temperature	0-45°C
IP protection class	IP30
Dimensions [Width x Height x Deep]	86 x 86 x 10 mm
Thickness after mounting in a wall-box ø60	10 mm