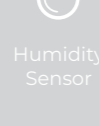


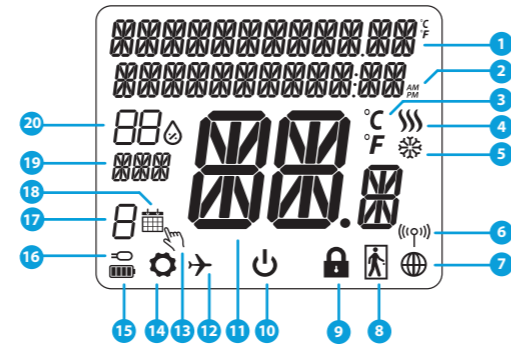
OMNIE

CSQ-RFW/STAT

RF Wireless battery Stat



LCD Icon Description



- | | |
|-----------------------------------------------------------------------|------------------------------------------------|
| 1. Menu/Settings description + Clock | 10. Standby mode icon |
| 2. AM/PM | 11. Current Temperature / Setpoint Temperature |
| 3. Temperature unit | 12. Holiday mode |
| 4. Heating indicator (icon is animating when there is heating demand) | 13. Temporary override mode |
| 5. Cooling indicator (icon is animating when there is cooling demand) | 14. Settings icon |
| 6. RF Connection indicator | 15. Battery status indicator |
| 7. Internet connection indicator | 16. External / Floor temp sensor indicator |
| 8. Occupancy sensor (hotel card) | 17. Schedule program number |
| 9. Key lock function | 18. Schedule mode icon |
| | 19. Day indicator/ SET information |
| | 20. Current Humidity value |

Buttons Description

Button	Function
	1) Menu button / Return button. 2) In the MAIN SCREEN: Press and hold for 3 sec to change the thermostat operating mode (Schedule mode / Permanent mode / Temporary override mode). 3) In the SETTINGS SCREEN: Press and hold for 3 sec to go back without saving the changes. 4) In the PAIRING SCREEN (in SYSTEM TYPE Menu): Press and hold for 3 sec to see other pairing options.
	„Down“ Button (Decrease parameter value/moving on the menu in „DOWN“ direction)
	„Up“ Button (Increase parameter value/moving on the menu in „UP“ direction)
	1) Press and hold for 3 seconds to POWER UP new device 2) „OK / Tick“ Button (Confirm parameter value / Go to the next menu / Save settings) 3) In the MAIN SCREEN: Press and hold for 3 seconds to enter Standby mode 4) In the SETTINGS SCREEN: Press and hold for 3 sec to go back to the MAIN SCREEN & SAVE all the changes. 5) During PAIRING process – hold button for 3 seconds to POWER OFF or REBOOT the thermostat.
	In the MAIN SCREEN - press and hold these buttons together for 3 seconds to LOCK / UNLOCK the Thermostat keys.

Compatibility with Other OMNIE devices:

CSQ-RFW/STAT can work in ONLINE or OFFLINE mode.
At first step you need to decide in which mode your thermostat will work.

<p>ONLINE MODE</p> <p>OMNIE Communications Gateway is CONNECTED TO THE INTERNET You can configure and use all your devices in the OMNIE Home App</p>	<p>OFFLINE MODE</p> <p>OMNIE Communications Gateway is NOT CONNECTED TO THE INTERNET - You can use your devices locally without the SmartHome App. Gateway works in this mode as standard ZigBee coordinator.</p>
<p>Download the OMNIE Home App on your iOS or Android device for remote access to your OMNIE equipment.</p>	

Compatible devices:

<p>CSQ-RELAYRF OMNIE Smart Relay *Only with Online Mode</p>	<p>Wiring Centre for 8-zone underfloor heating (UFH).</p>	<p>TRV (Thermostatic Radiator Valve) with wireless communication.</p>
----------------------------------------------------------------------------	-----------------------------------------------------------	----------------------------------------------------------------------------------

First Power Up Sequence

Please note:

For easier installation, please make sure you have already added other devices to your ZigBee network, such as Underfloor Heating Control Box or Radiator heads (TRV's), etc.

- Remove the protection foil..
- To power on the Thermostat hold button for 3 seconds..
-display will show all icons....
- SOFTWARE VERSION 0.5
- LANGUAGE ENGLISH

...then thermostat will display the software version...

Now, choose your language by or buttons. Confirm your language by button.

Installation in ONLINE mode

After Language selection follow below steps to add your device to the OMNIE Home App and pair with other devices:

- LANGUAGE ENGLISH
- CONNECT WITH THE NETWORK
- Go to OMNIE Home App
- OMNIE Home App interface
- Scan for equipment
- Welcome! Let's connect your equipment

- Let's connect your equipment
- Click the piece of equipment you'd like to begin with.
- GO TO SMART HOME APP
- Once your thermostat is added to the app you will see above screen on the LCD.
- Check the box next to each piece of equipment you'd like to connect now. Click "Connect equipment".
- Success! Equipment below is now connected to your gateway. Please name your equipment.
- Let's set up your equipment
- Click the piece of equipment you'd like to begin with.
- Connect equipment
- Connect equipment
- Finish

Introduction

The CSQ-RFW/STAT is a ZigBee temperature controller for wireless control of a specific series that can be used with a wiring centre, thermostatic radiator valve, boiler control module. In order to control CSQ-RFW/STAT via the OMNIE Home app (ONLINE mode), it must be installed together with the CSQ-GATEWAY Internet gateway (sold separately). From the application level it is possible to pair CSQ-RFW/STAT with other system elements, e.g. Smart Plug, OMNIE Smart Relay or window/door sensor. CSQ-RFW/STAT can be used locally without an Internet connection (OFFLINE mode).

Product Compliance

This product complies with the essential requirements and other relevant provisions of Directives 2014/30/EU, 2014/35/EU, 2014/53/EU and 2011/65/EU. The full text of the EU Declaration of Conformity is available at the following internet address: www.omnie.co.uk/legal 868.0-868.6MHz; <13dBm

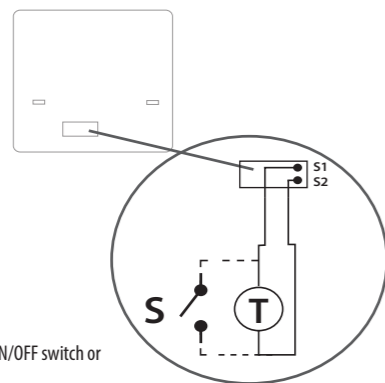
Safety Information

Use in accordance to national and EU regulations. Use the device as intended, keeping it in dry condition. Product for indoor use only. Installation must be carried out by a qualified person in accordance to national and EU regulations. Disconnect your equipment before cleaning it with a dry cloth.

Package Content:

- 1) CSQ-RFW/STAT Thermostat
- 2) Wall mounting plate
- 3) Self-adhesive mounting tape
- 4) Mounting screws
- 5) Manual instruction

Before you start:



Symbols explanation:

- S – volt-free contact
- T – temperature sensor
- S1, S2 Terminals:
 - air or floor temperature sensor
 - external volt-free contact to connect any ON/OFF switch or occupancy sensor (Hotel card)

Please note:

The ideal position to thermostat mounting is about 1,5m under floor level far from heating or cooling sources. Thermostat can't be exposed to sunlight or any extreme conditions like for example draft.

- UHF Wiring Centre
- Smart Radiator Control
- Smart Plug
- Smart Relay
- More+
- Connect equipment
- Name this equipment CSQ-RFW/STAT
- Finish
- After that thermostat will show main screen. Congratulations! You successfully configured CSQ-RFW/STAT Thermostat.

Installation in OFFLINE mode

Pairing with Wiring Centre / Control Box (Install the Wiring Centre / Control Box according to the instructions included with product)

- LANGUAGE ENGLISH
- CONNECT WITH THE NETWORK
- Open the ZigBee network
- SYSTEM TYPE UNDERFLOOR
- SELECT THE CONTROL BOX: 01
- SELECT THE ZONE BOX: 01

Select system type: UNDERFLOOR, press button to confirm

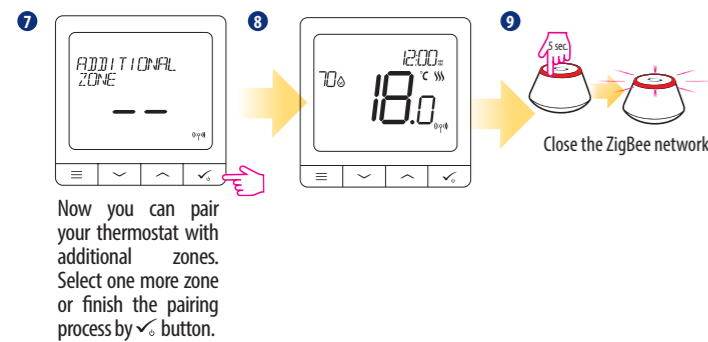
Using and buttons select the Control Box number (press PAIR button on the Control Box to see its address number). Press button to confirm

Use or buttons to select the zone number and press button to confirm.

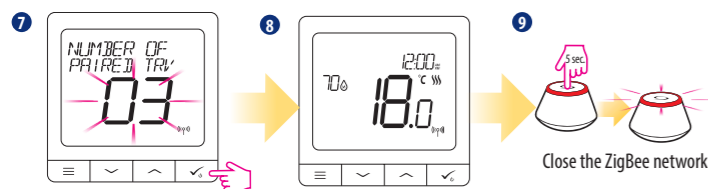
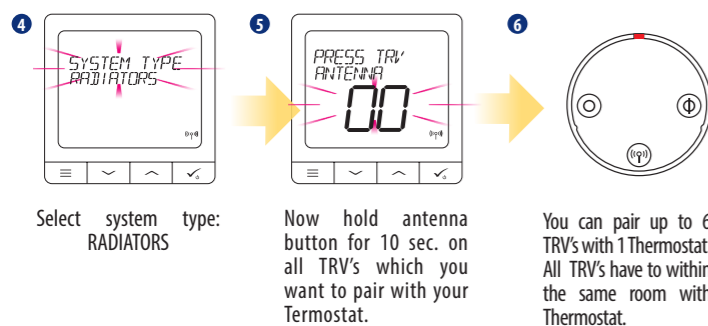
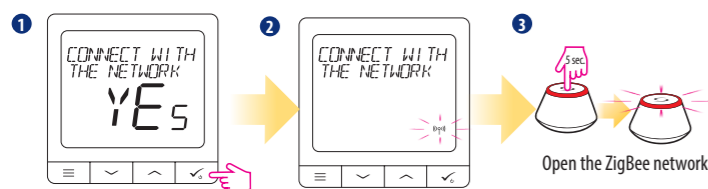
OMNIE Limited
Unit 18 Apple Lane
Exeter
EX2 5GL
United Kingdom

Technical support can be found at:
Customer.services@omnie.co.uk
01392 36 36 05





Pairing with a Thermostatic Radiator Valve



On the LCD you will see the number of paired TRV's. Once all TRV's are paired - press ✓ button to finish the pairing process.

CSQ-RFW/STAT Full menu structure

Main menu

Schedule settings	<ul style="list-style-type: none"> DISABLE MO-FR+SA-SU MO-SU SINGLE DAYS
User settings	<ul style="list-style-type: none"> TIME/DATE HOLIDAY MODE THERMOSTAT CALIBRATION SHOW/HIDE DISPLAY HUMIDITY SHOW/HIDE DISPLAY FLOOR STANDBY TEMP SETPOINT HEAT/COOL RESET USER SETTINGS
Admin settings	<ul style="list-style-type: none"> TEMPERATURE SCALE DISPLAY TEMPERATURE RESOLUTION ^{1.} HEAT CONTROL ALGORITHM ^{2.} COOL CONTROL ALGORITHM S1/S2 INPUT ^{3.} MINIMUM SETPOINT MAXIMUM SETPOINT VALVE PROTECTION ^{4.} MINIMUM TURN OFF TIME ^{5.} OPTIMISATION FEATURE ^{6.} COMFORT WARM FLOOR ^{7.} PIN CODE DEVICE INFORMATION ^{8.} FACTORY RESET ^{9.}
Language	<ul style="list-style-type: none"> ENGLISH DANISH POLISH ...

Short description of some selected functions (all functions are described in the full version of the CSQ/RFW-STAT manual):

- 1.DISPLAY TEMP RESOLUTION:** This function determines the resolution of the displayed temperature (0.5°C or 0.1°C). Temperature unit
- 2.CONTROL ALGORITHM:** This function defines how to control the room temperature. Available options are: ITLC for Underfloor Heating / Radiators / Electrical Heating (that's advanced algorithm for precise maintenance of room temperature), hysteresis +/-0.5°C or +/-0.25°C.
- 3. S1/S2 INPUT:** A floor sensor, an external temperature sensor or an occupancy sensor can be connected to the S1/S2 input of CSQ-RFW/STAT. Additionally, by connecting a NO type of ON/OFF voltage-free contact, you can use this input as a OneTouch rules trigger (programmed in the OMNIE Home App) or as a Heat/Cool changeover.
- 4. VALVE PROTECTION:** This function activates all actuators once a week for 5 minutes (in summer, this function helps to prevent the actuators stuck).
- 5. INTERNAL RELAY (COM/NO):** Internal relay activation or deactivation with COM/NO outputs use. Default is enable.
- 6. MIN TURN OFF TIME:** Minimum switch-off time (thermostat will not send the signal for heating/cooling more often than specified in this parameter)
- 7. OPTIMISATION FEATURE:** Optimum Start and Optimum Stop functions are energy saving feature that makes thermostat most cost effective (in combination with ITLC control algorithm).
- 8. COMFORT WARM FLOOR:** This function helps to keep the floor warm, even if the room is warm enough and there is no need to turn on the heating. User can select 3 levels of warm floor feature. Please note it is not an economy feature, as your heating system may be ON even if there is no heating demand from the room thermostat. It is COMFORT feature which keeps your floor warm all the time.
- 9. DEVICE INFORMATION:** In this menu user can check: Software Version, RF range value, Paired devices or also user can activate Identification mode. **FACTORY RESET: Here you can RESET your device to factory settings. After successful reset device will be removed from ZigBee network and you will need to add / pair your device again.**

CSQ-RFW/STAT, OMNIE Wireless Thermostat (RF)

Power Supply	Built-in Li-Ion 3,7V Battery
Charging voltage (no charger included)	Micro-USB 5V DC, min 0,5 A
Temperature range	5-40°C
Display temperature accuracy	0.5°C or 0.1°C
Control algorithm	ITLC SPAN (±0.25°C / ±0.5°C)
S1-S2 Input (multifunctional input)	Floor temperature Air temperature Occupancy sensor One Touch Changeover (heating/cooling)
Communication protocol	ZigBee 2,4GHz
Mounting	Surface mounting
Working temperature	0-45°C
IP protection class	IP30
Dimensions [Width x Height x Deep]	86 x 86 x 11 mm